



# **MAKERERE UNIVERSITY**

## **PROPOSAL FOR**

### **OPERATIONALISATION OF THE COLLEGE OF ENGINEERING, DESIGN, ART AND TECHNOLOGY (CEDAT)**

**NOVEMBER 2010**



## EXECUTIVE SUMMARY

The Makerere University Strategic Plan 2008-2018 requires that the University moves towards becoming a research-led institution. This calls for major reforms in the University's governance, financial and administrative structures, with the purpose of making them leaner and more efficient.

Makerere University Council has approved the College statute to guide units in the formation of colleges. At its meeting held on 4<sup>th</sup> November 2010, the Makerere University senate approved the formation of the College of Engineering, Design, Art and Technology. The College comprises of the current Margaret Trowell School of Industrial and Fine Art and the Faculty of Technology.

This proposal seeks to fulfill the requirements of the Strategic Plan of reforming the administrative structures of the merged units, improving the quality of teaching, learning and research, and harmonizing programmes with synergies, as well as elimination of duplication. The College will comprise of three schools, i.e. School of Engineering; School of the Built Environment, and the Margaret Trowell School of Industrial and Fine Arts.

The College will be managed by an administrative team led by a College Principal. Each of the Schools shall initially comprise of three departments which will administer and deliver academic programmes at undergraduate and graduate level. One institute has been proposed, and four centres to serve as a base for knowledge transfer partnerships.



## Contents

EXECUTIVE SUMMARY .....	ii
1.0 INTRODUCTION.....	1
1.1 Current Curricula:.....	1
1.2 Mission.....	1
1.3 Objectives.....	2
1.4 Goals.....	2
2.0 ACADEMIC STRUCTURE OF THE COLLEGE OF ENGINEERING DESIGN ART AND TECHNOLOGY .....	5
2.1 School of Engineering.....	5
2.2 School of the Built Environment .....	6
2.3 Margaret Trowell School of Industrial and Fine Art.....	6
3.0 Approved And Proposed Academic Staff Establishment In The Schools And Institutes Of The College Of Engineering Design Art And Technology .....	7
3.1 School of Engineering .....	7
3.2 School of the Built Environment .....	8
3.3 The Margaret Trowell School of Industrial and Fine Arts.....	9
4.0 PROPOSED ESTABLISHMENT IN THE INSTITUTE OF HERITAGE CONSERVATION AND RESTORATION.....	10
4.1 Proposed Centres For The College Of Edat And Their Establishment.....	10
PHYSICAL INFRASTRUCTURE.....	14



## **1.0 INTRODUCTION**

The idea to establish a College of Engineering Design Art and Technology (CEDAT) has been discussed since the beginning of the millennium, after realizing the glaring co-relation between the Faculty of Technology (FOT) and the Margaret Trowell School of Industrial and Fine Art (MTSIFA). In 2004, the first formal meetings were held between the two faculties and a Committee on the Formation of a Constituent College of EDAT was set up to work out the modalities. It was however not until 2009 that the idea of a College of EDAT was concretized having realized the longstanding mutual relationship that MTSIFA and FOT have enjoyed since the 1980s. FOT students would come to MTSIFA for Art history and Drawing classes, while MTSIFA students sought the technological input of FOT while executing their major projects in the various art and design disciplines. FOT students and staff have from time to time collaborated with MTSIFA academic staff and students on various research projects aimed at improving materials, products and systems for sustainable industrial development.

This academic cooperation springs from the practical-based teaching and learning methods in FOT and MTSIFA which emphasize creativity and innovation aimed at solving societal problems. The technological advancement in the twenty-first century has further reduced the gap between art, design and technology, which more than ever before, calls for interdisciplinary pedagogical approaches between the artists, designers, architects, surveyors, construction managers and engineers. Therefore, the merger of FOT and MTSIFA to form a College of Engineering Design Art and Technology is a step in the right direction which has long been overdue.

### **1.1 Current Curricula:**

The Faculty of Technology is offering a range of three to five year full-time undergraduate programmes in Civil, Mechanical, Electrical, Computer and Telecommunications Engineering as well as Architecture, Land and Quantity Surveying, Land Economics and Construction Management and Engineering, as well as graduate programmes (Postgraduate Diplomas, Masters and PhD) in technological related fields.

The Margaret Trowell School of Industrial and Fine Arts (MTSIFA) is offering a three-year full-time Bachelor of Industrial and Fine Art (BIFA) degree programme, a two-year Master of Art in Fine Art (MAFA) and a three year Doctor of Philosophy. These are aimed at developing cultural, historical and industrial understanding of the arts/design as well as the creative and performing ability of art and design students.

### **1.2 Mission**

To promote advancement in engineering, design, art and technology through education, training, research, professional services and innovation for sustainable industrial development



### **1.3 Objectives**

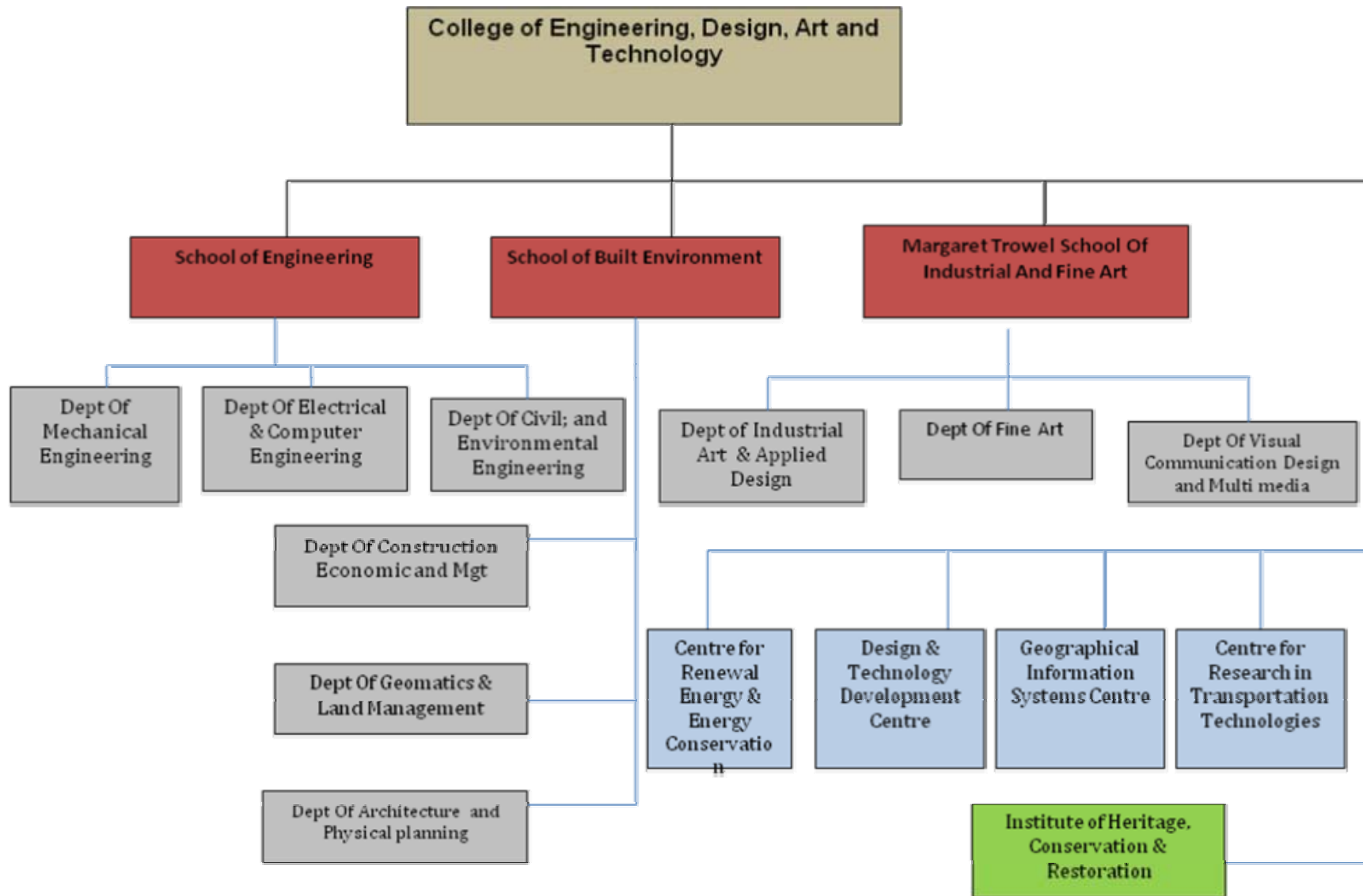
- i. To create viable units for inter-disciplinary research and training
- ii. To promote graduate training
- iii. To increase the ratio of female students and staff

### **1.4 Goals**

- i. To improve the quality of research and training
- ii. To increase the number of graduates in engineering, art, design and technology fields
- iii. To increase the number and quality of innovations
- iv. To enhance knowledge transfer partnerships
- v. To promote internationalisation

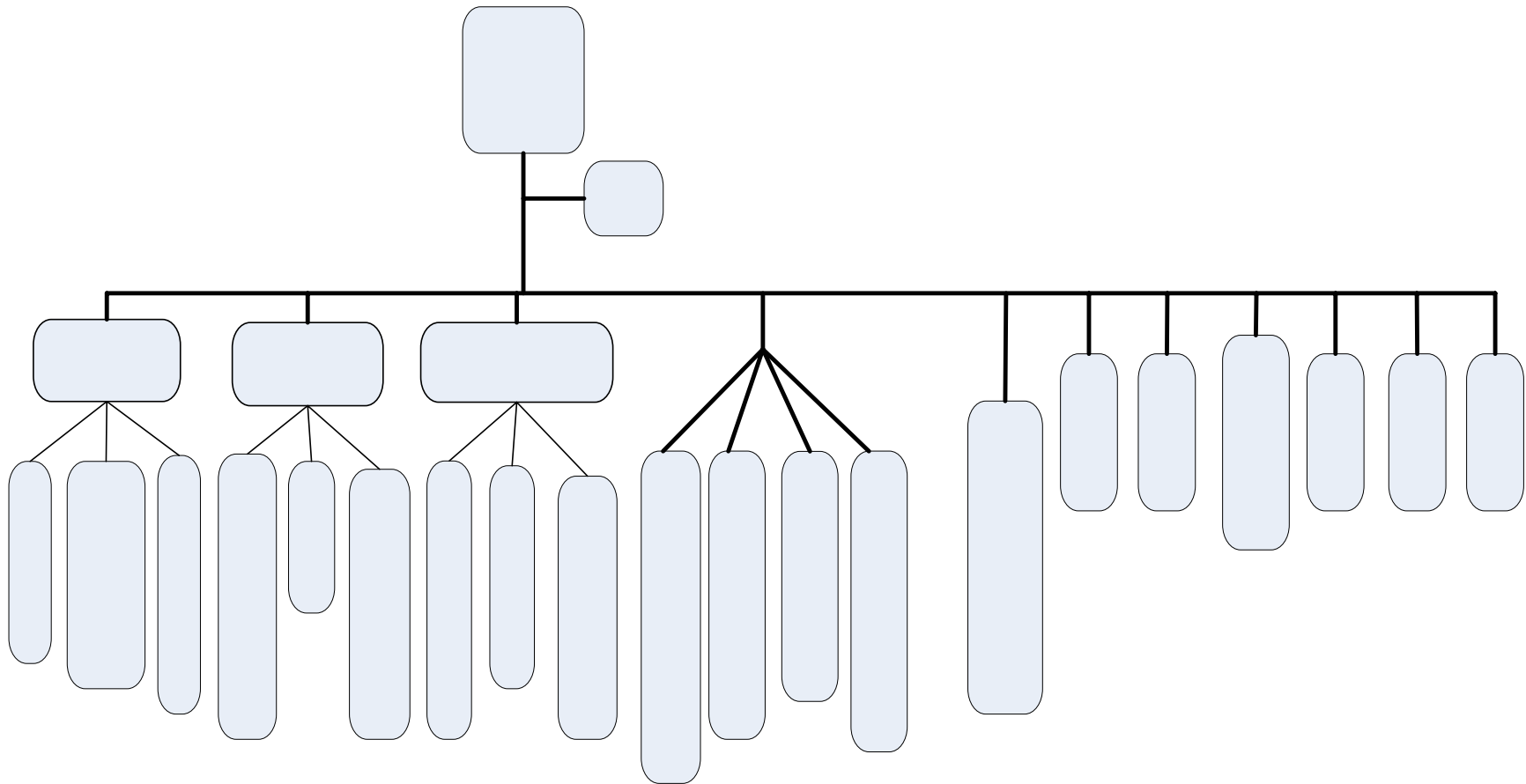


**I. The Organizational Structure of the College of Engineering Design Art and Technology**





## **II. Administrative structure of the College of Engineering Design and Technology**





## **2.0 ACADEMIC STRUCTURE OF THE COLLEGE OF ENGINEERING DESIGN ART AND TECHNOLOGY**

The College of EDAT shall be composed of three Schools with nine departments offering both undergraduate and graduate programmes in the fields of engineering, design, art and technology. The School of Engineering shall be comprised of three departments namely: Civil and Environmental Engineering; Electrical and Computer Engineering, and Mechanical Engineering. The School of the Built Environment shall have three departments: Architecture and Physical Planning; Construction Economics and Management; and Geomatics and Land Management. The Margaret Trowell School of Industrial and Fine Arts shall also initially have three departments. Because of the need to streamline teaching, learning and research activities at MTSIFA, the original departments (Painting and Art History; Sculpture and Drawing; and Industrial Arts and Design) shall be disbanded and a new nomenclature has been proposed as follows: Department of Fine Art; Department of Visual Communication Design and Multi-media; and Department of Industrial Art and Applied Design. Details of programmes currently offered in each School are given below.

### **2.1 School of Engineering**

<b>Departments</b>	<b>Undergraduate Programmes</b>	<b>Graduate Programmes</b>
Civil Engineering and Environmental Management	BSc. Civil Engineering	MSc. Engineering (Civil), M.Eng Engineering (Civil), PhD
Electrical and Computer Engineering	BSc Electrical Engineering	MSc Engineering (Electrical), MEng Engineering (Electrical), MSc Renewable Energy PhD,
	BSc Computer Engineering	
	B.Sc Telecommunication Engineering	
Mechanical Engineering	BSc Mechanical Engineering	MSc Engineering (Mechanical), MEng Engineering (Mechanical), MSc. Innovation and Industrial Development PhD



## 2.2 School of the Built Environment

Departments	Undergraduate Programmes	Graduate Programmes
Architecture and Physical Planning	B. Architecture B. Urban & Regional Planning	MArch, PGD in Physical planning, MPhysical Planning, PhD
Construction Economics and Management	BSc. Construction Management, BSc. Land Economics, BSc. Quantity Surveying	MSc. Construction Management, Post Graduate Diploma in Construction Project Management
Geomatics and Land Management (Currently Surveying)	BSc. Geomatics and Land Management (Currently BSc. Surveying)	MSc. Geographical Information Systems and Technology, PhD

## 2.3 Margaret Trowell School of Industrial and Fine Art

MTSIFA currently offers a Bachelor of Industrial and Fine Art (BIFA), a Master of Arts in Fine Art (MAFA) and a PhD programme. However, MTSIFA proposes the following programmes which are almost ready for submission to the Directorate of Quality Assurance. When approved, these programmes will be administered in the new departments as follows:

Departments (Re-structured)	Undergraduate Programmes	Graduate Programmes
Industrial Art and Applied Design	B. Industrial Art and Applied Design	M. Industrial Art and Design, PhD
Visual Communication Design and Multi-media	B. Visual Communication Design	M. Visual Communication Design, M. Multimedia Design, PhD
Fine Art	B. Fine Art,	MA. Fine Art, M. Art History, PhD



### **3.0 Approved And Proposed Academic Staff Establishment In The Schools And Institutes Of The College Of Engineering Design Art And Technology**

#### **3.1 School of Engineering**

a) Establishment in the Department of Civil Engineering and Environmental Management

Post	Approved Establishment	Filled	Vacant	Proposed Establishment
Professor	2	2	0	4
Associate Professor	2	0	2	4
Senior Lecturer	4	2	2	6
Lecturer	7	7	0	8
Assistant Lecturer	4	6	(2 )	4
Teaching Assistant	2	2	0	2
Total	21	20	2	28

b) Establishment in the Department of Mechanical Engineering

Post	Approved Establishment	Filled	Vacant	Proposed Establishment
Professor	2	0	2	4
Associate Professor	2	2	0	4
Senior Lecturer	4	4	0	6
Lecturer	7	4	3	8
Assistant Lecturer	4	7	(3 )	4
Teaching Assistant	2	4	(2 )	2
Total	21	21	0	28

c) Establishment in the Department of Electrical and Computer Engineering

Post	Approved Establishment	Filled	Vacant	Proposed Establishment
Professor	2	1	1	4
Associate Professor	2	0	2	4
Senior Lecturer	4	4	0	10
Lecturer	7	4	3	15
Assistant Lecturer	2	8	-6	15
Teaching Assistant	6	9	-3	10
Total	23	26		58
Senior Technician	1	1	0	2
Technical Assistants	2	2	0	4
Lab attendant	1	1	0	3



### 3.2 School of the Built Environment

#### a) Establishment in the Department of Architecture and Physical Planning

Post	Approved Establishment	Filled	Vacant	Proposed Establishment
Professor	2	0	2	4
Associate Professor	2	1	1	4
Senior Lecturer	4	2	2	6
Lecturer	7	6	1	8
Assistant Lecturer	4	5	-1	4
Teaching Assistant	2	2	0	2
Total	21	15		28
Senior Technician	1			?
Technical assistants	2			?

#### b) Establishment in the Department of Construction Economics and Management

Post	Approved Establishment	Filled	Vacant	Proposed Establishment
Professor	1			3
Associate Professor	1	1		3
Senior Lecturer	2			6
Lecturer	4	1		12
Assistant Lecturer	4	27		12
Teaching Assistant	2			6
Total	14	29		42

#### c) Establishment in the Department of Geomatics and Land Management

Post	Approved Establishment	Filled	Vacant	Proposed Establishment
Professor	2	0	2	2
Associate Professor	2	0	2	2
Senior Lecturer	4	1	3	4
Lecturer	8	4	4	8
Assistant Lecturer	4	5	1 above	4
Teaching Assistant	2	4	2 above	2
Total	22	14		22



### 3.3 The Margaret Trowell School of Industrial and Fine Arts

a) Establishment in the Department of Fine Art (formerly Dept. of Painting & Art History)

Post	Approved Establishment	Filled	Vacant	Proposed Establishment
Professor	2	1	1	4
Associate Professor	2	0	2	4
Senior Lecturer	4	2	2	6
Lecturer	8	6	0	6
Assistant Lecturer	4	2	2	4
Teaching Assistant	2	2	0	4
Total	22	13	7	28
Senior Technician	0	0	0	1
Technical assistants	2	1	1	2

b) Establishment in the Department of Industrial Art and Applied Design (formerly Sculpture and Drawing)

Post	Approved Establishment	Filled	Vacant	Proposed Establishment
Professor	1	0	1	4
Associate Professor	2	1	1	4
Senior Lecturer	3	2	1	6
Lecturer	4	4	0	6
Assistant Lecturer	4	4	0	4
Teaching Assistant	2	2	0	4
Total	16	13	3	28
Senior Technician	0	0	0	1
Technical assistant	1	1	0	2

c) Establishment in the Department of Visual Communication Design and Multi-media (formerly Dept. of Industrial Art and Design)

Post	Approved Establishment	Filled	Vacant	Proposed Establishment
Professor	1	0	1	4
Associate Professor	2	1	1	4
Senior Lecturer	3	2	1	6
Lecturer	4	6	1	6
Assistant Lecturer	4	2	1	4
Teaching Assistant	2	2	0	4
Total	16	13	3	28
Senior Technician	0	0	0	1
Technical assistant	3	3	0	2



## 4.0 PROPOSED ESTABLISHMENT IN THE INSTITUTE OF HERITAGE CONSERVATION AND RESTORATION

### a) Proposed Establishment in the Institute of Heritage Conservation and Restoration

Post	Qualifications	No. of Positions	Filled	Vacant
Director	PhD	1		
Curator	PhD	1		
Researchers	PhD	2		
Gallery Administrator		1		
Gallery assistants	BIFA/BFA	2		
Conservation Technician	BSc. Chemistry/material culture	2		
Total		9		

## 4.1 PROPOSED CENTRES FOR THE COLLEGE OF EDAT AND THEIR ESTABLISHMENT

The College is starting off with four centres that will act as the College base for service and knowledge-transfer partnerships. Given the proposed nature of their services, college centres shall be self sustaining. The centre will be headed by a Director and shall be accountable to the College Principal.

### a) Proposed Structure of the Centre for Research in Energy and Energy Conservation

Post	Qualifications	No. of Positions
Director	PhD	1
Research Coordinator	PhD	1
Research Fellows	MSc	3
		5

### b) Proposed Structure of the Centre for Research in Transportation Technologies

Post	Qualifications	No. of Positions
Director	PhD	1
Research Coordinator	PhD	1
Research Fellows	MSc	3
		5



c) Proposed Structure of the Centre for Design and Technology Development

Post	Qualifications	No. of Positions
Director	PhD	1
Research Coordinator	PhD	1
Research Fellows	MSc/ M. Des/MAFA	3
		5

d) Proposed Structure for GIS Centre

Post	Qualifications	No. of Positions
Director	PhD	1
Research Coordinator	PhD	1
Research Fellows	MSc	3
		5



## PROJECTED STUDENT ENROLMENT IN THE COLLEGE OF EDAT FOR THE NEXT 5 YEARS

### School of Engineering

Departments	Undergraduate Programmes	Current No. of students	Projected No. of Students	Graduate Programmes	No. of students	Projected No. of Students	Total Projected
Civil Engineering and Environmental Management	BSc. Civil Engineering	440	600	MSc. Civil Engineering, M.Eng Civil Engineering, PhD	40	100	700
Electrical and Computer Engineering	BSc Electrical Engineering	420	500	MSc Electrical Engineering, MEng Electrical Engineering, PhD,	30	50	1610
	B.Sc Telecommunication Engineering	430	500				
	BSc Computer Engineering	250	560				
Mechanical Engineering	BSc. Mechanical Engineering	251	350	MSc Mechanical Engineering, Meng, Mechanical Engineering, PhD	16	50	400



## School of the Built Environment

Departments	Undergraduate Programmes	No. of students	Projected No. of students	Graduate Programmes	No. of students	Projected No. of students	Total Projected
Architecture and Physical Planning	B. Architecture	150	250	M.Arch, PhD	14	25	725
	Urban and Regional Planning	0	400	PGDURP M. Urban and Regional Planning, PhD	0	50	
Construction Economics and Management	BSc. Construction Management	203	300	PGD Constr. Management, MSc. Construction Management			900
	BSc. Land Economics,	213	300				
	BSc. Quantity Surveying	202	300				
Geomatics and Land Management	BSc. Geomatics and Land Management	235	400	MSc. Geo-information Science and Technology, PhD	0	30	430

## Margaret Trowell School of Industrial and Fine Art

Departments	Undergraduate Programmes	Current No. of students	Projected No. of students with the new programs	Graduate Programmes	No. of students	Projected No. of students	Total Projected
Industrial Art and Applied Design	B. Industrial and Fine Art (BIFA)	412	B. Industrial Art and Applied Design 200	M. Industrial Art and Design, PhD	6 MAFA 5 PhD	30 M 3 PHD	235
Visual Communication and Multi-media			B. Visual Comm. Design 200	M. Visual Communication Design, M. Multi-Media Design, PhD		40 M 4PHD	245
Fine Art			B. Fine Art 150	M. Fine Art, M. Art History, PhD		20M 5PHD	175



## PHYSICAL INFRASTRUCTURE

FACILITY	UNIT MEASURE	QUANTITY	REMARKS
Academic Floor Area	SQ.M	16,000	Slightly above NCHE Standard
Laboratory and Workshop facilities	ITEM	-	Currently inadequate, but being rehabilitated and up-graded through various programmes
Library	No. of Volumes	5,000	Spacious ICT networked library in new Technology building
ICT facilities	ITEM		
No. of Student Computers	No.	280	Ratio of 1: 10, which is below recommended standard and procurement is on-going
Internet	ITEM	-	All buildings, offices, labs, classrooms are networked.
Modern Teaching Equipment	ITEM	-	LCDs available to 50% of classes at any one time

## NATIONAL AND INTERNATIONAL PROGRAMMES

- i. The Presidential Innovations Initiative - Shs. 22.5 bn
- ii. Sida Research Programme - \$ 5 million
- iii. Italian Cooperation programme - \$ 2.5 million
- iv. Millenium Science Initiative - Shs. 6 bn
- v. Uganda Police - Shs. 1.2 bn
- vi. Rockefeller Clusters Programme - \$ 0.25 m
- vii. World Bank Energy Projects - \$ 0.5 m
- viii. NOMA Programmes - \$ 2.5 m
- ix. Education Partnerships in Africa - \$ - 0.1m

## NATIONAL AND INTERNATIONAL COLLABORATIONS/NETWORKS

- i. Regional Collaboration of Faculties of Engineering and Technology
- ii. Collaboration with 6 Swedish universities
- iii. Collaboration with 2 Norwegian Universities
- iv. Collaboration with Vaal University of Technology SA
- v. Collaboration with Northumbria University UK
- vi. Collaboration with Penn-State University USA
- vii. Collaboration with Durban University of Technology SA
- viii. Collaboration with Kenyatta University
- ix. Collaboration with MIT
- x. Collaboration with Uganda Police
- xi. Collaboration with PSFU
- xii. Collaboration with UPDF



## On-going research at FOT and MTSIFA

Architecture	Electrical/ Computer Engineering	Civil	Mechanical	Geomatics	MTSIFA
Architecture	Community Wireless Resource Centre	Road stripping	Development of Energy Efficient lime kiln	Data mining for wetlands	Design Education for creative Entrepreneurship in East Africa
Housing	Centre for Research in Energy and Energy Conservation	Sanitation systems	Wind energy for water pumping and electricity generation		Pottery and the Need for Ceramic centers in South- Western Uganda
Urban Sprawl	Ilabs	Decision Support system for water management	Gasification technologies		
Conservation	Vehicle Design Project		Solar thermal system		
Social and Cultural Conflicts in design	ARMS		Ceramics materials		
Vernacular Architecture	Maka Pads				



## CHANGES IN THE ADMINISTRATIVE STRUCTURE

POSITION	CURRENT NO. (FOT)	CURRENT NO. (MTSIFA)	CURRENT TOTAL, FOT & MTSIFA	PROPOSED FOR CEDAT	% REDUCTION OR INCREMENT
Principal	0	0	0	1	+100%
Deputy Principal	0	0	0	1	+100%
Dean	1	1	2	3	+50%
Deputy Dean	2	1	3	0	-300%
Head of Department	7	3	10	9	-10%
Director, Institute	0	0	0	1	+400%
Director, Centre	2	0	2	4*	+60%
Bursar	0	0	0	1	+100%
Accountant	1	1	2	1	-50%
Librarian	1	2	3	3	0%
Registrar	0	0	0	1	+100%
Asst. Registrar	2	1	3	2	-33%
Human Resource Manager	0	0	0	1	+100%
Resource Mobiliser	0	0	0	1	+100%
ICT Officer	0	0	0	1	+100%
Network Administrator	1	0	1	2	+100%
Procurement Officer	0	0	0	1	+100%
Administrative Secretary	1	1	2	4	+100%
Stenographer	10	4	14	6	-60%
Custodian	1	2	3	2	0%
Office Messenger	8	0	8	2	-500%
Driver	4	0	4	1	-300%
Total All Positions			57	48	-16%
% Support Staff of Total Establishment			32%	15%	



## LIST OF ACADEMIC AND ADMINISTRATIVE STAFF IN THE COLLEGE OF ENGINEERING DESIGN ART AND TECHNOLOGY

### Margaret Trowell School of Industrial and Fine Arts – Department of Fine Art

	Name	Designation	Highest Qualification
1.	Ssengendo Pilkington Nsibambi	Professor	MAFA ( PhD under examination)
2.	Namubiru Kirumira Rose	Senior Lecturer	PhD
3.	Kizito Maria Kasule	Senior Lecturer	PhD
4.	Katende Sylvia N. Violet	Senior Lecturer	PhD
5.	Ifee Francis Xavier	Senior Lecturer	MAFA
6.	Namono Catherine	Lecturer	PhD
7.	Kabiito Richard	Lecturer	PhD
8.	Yiga Andrew P.	Lecturer	PhD
9.	Odama Jacob	Lecturer	MAFA
10.	Alawua Maria	Lecturer	MAFA
11.	Mubiita Stephen	Lecturer	MAFA
12.	Nabuyungo Rita Edopu	Asst. Lecturer	MAFA (PhD candidate)
13.	Balaba Edward	Teaching Assistant	BIFA, (MAFA candidate)
14.	Kato Abbey	Teaching Assistant	BIFA, (MAFA candidate)
15.	Sserubiri Darius Paul	Part-time staff	Msc. Med. Illustration
16.	Katrin Khaplake	Visiting Curator	M. Museum Studies
17.	Hasifa Mukyala	Part-time Gallery Assistant	BIFA
18.	Watsala Harrison	Part-time Gallery Assistant	BIFA
19.	Babirye Margaret	Copy typist	DIP

### Department of Industrial Art and Applied Design

	Name	Designation	Highest Qualification
1.	Kyeyune George William	Associate Professor	PhD
2.	Nakazibwe Venny	Senior Lecturer	PhD
3.	Kakande Angelo Angelus	Senior Lecturer	PhD
4.	Kanuge John Bosco	Lecturer	MAFA
5.	Sserunkuuma Bruno	Lecturer	MAFA
6.	Mwesigwa Stephen	Lecturer	MAFA
7.	Muwonge Mathias Kyazze	Asst. Lecturer	MAFA
8.	Ndagire Esther Kavuma	Asst. Lecturer	MAFA
9.	Nakisanze Sarah	Asst. Lecturer	MAFA
10.	Kasozzi Dora	Asst. Lecturer	MAFA
11.	Ssewanyana Robert	Asst. Lecturer	MAFA



12.	Mpindi Ronald Kibudde	Teaching Assistant	BIFA, (MFA candidate)
13.	Nantagya Donald	Teaching Assistant	BIFA, PGDE
14.	Buyungo Mary Ssonko	Part-time staff	H/DIP
15.	Ndagire Persis	Part-time staff	H/DIP
16.	Abic Lenny	Part-time staff	BIFA
17.	Kigonya Richard	Technician	DIP
18.	Korutaro Rovina	Technician	DIP
19.	Nganda Olive	Senior Typist	B. Social Sciences

#### **Department of Visual Communication Design and Multi-media**

	<b>Name</b>	<b>Designation</b>	<b>Highest Qualification</b>
1.	Kwesiga Philip	Associate Professor	PhD
2.	Nabulime Lilian	Lecturer	PhD
3.	Tumusiime Amanda	Lecturer	MAFA
4.	Banadda Godfrey	Lecturer	MAFA, PGDE
5.	Lubowa Paul	Lecturer	MAFA, PGDE
6.	Sematimba Joseph	Lecturer	M.Design
7.	Sserunjogi Patrick	Asst. Lecturer	MAFA (PhD candidate)
8.	Nsereko Raymond	Asst. Lecturer	MAFA
9.	Nakimbugwe Annette Ssebba	Asst. Lecturer	MAFA
10.	Nagawa Margaret	Asst. Lecturer	Master of Museum Studies (PhD candidate)
11.	Gwotcho Stephen	Asst. Lecturer	MAFA
12.	Kakinda Fred Kizito	Assist. Lecturer	MAFA
13.	Amanya Dicskon	Teaching Assistant	BIFA
14.	Bbanga Simon	Part-time staff	BIFA
15.	Kawooya James	Part-time staff	BBA
16.	Nakamanya Teddy	Technician/ Network administrator	B. Computer Science

#### **Dean's office**

	Kasule Faith	Assistant Registrar	M. Demography
	Mussajjakawa Margaret	Personal Secretary	DIP
	Nankinga Janat	Stenographer	DIP
	Kyebatala John	Temporary, Accounts clerk	DIP
	Kayitare Gaetano	Custodian	
	Tumusiime Moses	Custodian	



	<b>ARCHITECTURE</b>			
	SURNAME	FIRST NAME	DESIGNATION	Highest Qualification
1	BIRABI	ALLAN KENNETH	SENIOR LECTURER	DOCTOR OF PHILOSOPHY
2	KIGGUNDU	AMIN TAMALE	LECTURER	DOCTOR OF PHILOSOPHY
3	WAKUMA	ANDREW	LECTURER	MASTER IN URBAN DESIGN
4	NNAGGENDA-MUSANA	ASSUMPTA	LECTURER	DOCTOR OF PHILOSOPHY
5	NAWANGWE	BARNABAS	ASSOCIATE PROFESSOR	DOCTOR OF PHILOSOPHY
6	KYOSIMIRE	DOREEN TWEBAZE	ASSISTANT LECTURER	MASTER IN Dev. & PLANNING
7	ELWIDAA	EIMAN AHMED	ASSISTANT LECTURER	MASTER OF SCIENCE
8	BABIRYE	EVA	COPY TYPIST	CERTIFICATE
9	OMOLO - OKALEBO	FREDRICK	ASSISTANT LECTURER	MASTER IN ARCHITECTURE
10	NAKIMULI	GRACE	TECHNICAL ASSISTANT	DIPLOMA
11	ALINAITWE	HENRY MWANAKI	SENIOR LECTURER	DOCTOR OF PHILOSOPHY
12	SENKATUKA	IAN	LECTURER	DOCTOR OF PHILOSOPHY
13	MUSAMBA	JESSE	TEACHING ASSISTANT	BACHELOR OF ARCHITECTURE
14	SSEMWOGERERE	KENETH	LECTURER	DOCTOR OF PHILOSOPHY
15	SSEMATA	LAWRENCE	DRIVER	CERTIFICATE
16	NAMUGANYI	LILIAN	ASSISTANT LECTURER	MASTER OF HOUSING AND SETTLEMENT STUDIES
17	BIGIRWENKYA	MIKE KIIZA	TEACHING ASSISTANT	BACHELOR OF ARCHITECTURE
18	CATO	NICOLAI LUND	VISITING SENIOR LECTURER	MASTER IN URBAN PLANNING
19	NNAGGENDA	REGINA	PART-TIME LECTURER	MASTER IN ARCHITECTURE
20	SSEMUJU	RICHARD	TECHNICAL ASSISTANT	CERTIFICATE
21	KWEYUNGA	SALOME	LECTURER	MASTER OF SCIENCE
22	KAPASA	SAMMUEL	TECHNICIAN I	BACHELOR OF SCIENCE IN CIVIL ENGINEERING
23	KISA	SAMUEL GODWIN	ASSISTANT LECTURER	BACHELOR OF ARCHITECTURE
24	MUKIIBI	STEPHEN	LECTURER	DOCTOR OF PHILOSOPHY
	<b>CIVIL ENGINEERING</b>			
	RUGUMAYO	ALBERT ISIMBWA LYA' WARAGA	PART-TIME LECTURER	DOCTOR OF PHILOSOPHY
	BUREGYEYA	APOLLO	TEACHING ASSISTANT	BACHELOR OF SCIENCE IN CIVIL ENGINEERING
	MANGENI	BENNIE T.	SENIOR LECTURER	MASTER OF SCIENCE
	NIWAGABA	BUREGEYA CHARLES	LECTURER	DOCTOR OF PHILOSOPHY
	MBABAZI	BYARUHANGA TEDDY	COPY TYPIST	
	TINDIWENSI	DAN	SENIOR LECTURER	MASTER OF SCIENCE
	KALUMBA	DENIS	LECTURER	
	MUKASA	F.J NSUBUGA	TECHNICIAN I	CERTIFICATE
	MUGISHA	FERIHA MUKUVE	TEACHING ASSISTANT	BACHELOR OF SCIENCE IN ENGINEERING
	NGIRANE-KATASHAYA	GADDI	PROFESSOR	DOCTOR OF PHILOSOPHY



	MUYONJO	GEOFFREY MUKIIBI	ASSISTANT LECTURER	MASTER OF SCIENCE
	KASANGAKI	GILBERT JOSEPH	ASSISTANT LECTURER	MASTER OF SCIENCE
	KALIBBALA	HERBERT MPAGI	ASSISTANT LECTURER	BACHELOR OF SCIENCE IN ENGINEERING
	BAKAMWESIGA	HILARY	ASSISTANT LECTURER	MASTER OF SCIENCE
	MWAKALI	JACKSON ARAALI	PROFESSOR	DOCTOR OF PHILOSOPHY
	SEMUWEMBA	JAMES	ASSISTANT LECTURER	MASTER OF SCIENCE
	BESIGYE	JIMMY	TECHNICIAN II	DIPLOMA
	CLIFTON	JOHN JOSEPH	SENIOR SURVEY ASSISTANT	CERTIFICATE
	MUGENI	WANDERA LEONARD PAUL	LABORATORY ASSISTANT	UGANDA CERTIFICATE OF EDUCATION
	TUMUTUNGIRE	MARTIN DAHLIN	TEACHING ASSISTANT	MASTER OF SCIENCE
	KIGOBE	MAX	ASSISTANT LECTURER	DOCTOR OF PHILOSOPHY
	NAMUTEBI	MAY	ASSISTANT LECTURER	MASTERS
	KIZZA	MICHAEL	ASSISTANT LECTURER	MASTER OF SCIENCE
	MATOVU	MOSES JUNIOR	ASSISTANT LECTURER	MASTER OF SCIENCE
	KULABAKO	NAKAWUNDE ROBINAH	ASSISTANT LECTURER	MASTER OF SCIENCE
	BUSINGYE	NDAGAHWEIRE EMILLY	CLEANER/MESSENGER	
	MUJUGUMBYA	PAUL BAYIGA	LECTURER	MSC. CIVIL ENGINEERING
	NAKAZIBWE	RITA	LABORATORY ATTENDANT	
	MUSENZE	RONALD SSEMIGANDA	ASSISTANT LECTURER	MASTER OF SCIENCE
	RWENDEIRE	TURINAWA IVAN WARREN	SENIOR TECHNICIAN	DIPLOMA
	BAGAMPADDE	UMARU	SENIOR LECTURER	DOCTOR OF PHILOSOPHY
	ZIRABA	YASIN NAKU	SENIOR LECTURER	DOCTOR OF PHILOSOPHY
	LUSWA	YUNUS KIGONGO	TECHNICIAN II	
	<b>CONSTRUCTION ECONOMICS AND MANAGEMENT</b>			
	KERALI	ANTHONY GEOFFREY	ASSOCIATE PROFESSOR	DOCTOR OF PHILOSOPHY
	ODONGKARA	BILLY BRIAN	TEACHING ASSISTANT	BACHELOR OF SCIENCE
	ASHABAHEBWA	BRIAN PLIERS	TEACHING ASSISTANT	BACH OF SCI IN BUILDING ECONOMICS
	KIMANI	CATHERINE WAITHERA	ASSISTANT LECTURER	MASTERS
	ONYUTHA	CHARLES	TEACHING ASSISTANT	BACHELOR OF SCIENCE
	NATURINDA	DANS NSHEKANABO	TEACHING ASSISTANT	BACHELOR OF SCIENCE IN ENGINEERING
	CHEPTOEK	DAVID	TEACHING ASSISTANT	BACHELOR OF SCIENCE IN ENGINEERING
	MARACTHO	EMILLY CONFORT	TEACHING ASSISTANT	BACHELOR OF DEVELOPMENT STUDIES
	NAKIMULI	FLAVIA	TEACHING ASSISTANT	
	MWESIGE	GODFREY	TEACHING ASSISTANT	MASTER OF SCIENCE
	KAKITAH	JOHN MUHUMUZA	TEACHING ASSISTANT	BACHELOR OF SCIENCE
	ISYAGI	LINDA	ASSISTANT LECTURER	MASTER OF SCIENCE



	MWANJE	NASSIR	TEACHING ASSISTANT	BACHELOR OF SCIENCE
	KIBWAMI	NATHAN	TEACHING ASSISTANT	BACH OF SCI IN BUILDING ECONOMICS
	AJIRI	NORMAN ROGER	ASSISTANT LECTURER	MASTER OF SCIENCE
	EKYALIMPA	RONALD	ASSISTANT LECTURER	MASTER OF SCIENCE
	SEMANDA	JULIUS		
	<b>ELECTRICAL ENGINEERING</b>			
	WASSWA	ABUBAKER MATOVU	ASSISTANT LECTURER	BACHELOR OF SCIENCE
	TUMWESIGYE	ALEX	TEACHING ASSISTANT	BACHELOR OF SCIENCE IN ELECTRICAL ENGINE
	MUSAASI	KIZZA MOSES	SENIOR LECTURER	DOCTOR OF PHILOSOPHY
	MUGUWA	ANDREW	ASSISTANT LECTURER	MASTER OF SCIENCE
	BUHANGA	B	PART-TIME LECTURER	
	SENDEGEYA MAKANGA	CHARLES	TEACHING ASSISTANT	MASTERS
	OTINE	CHARLES DANIEL	ASSISTANT LECTURER	MASTER OF SCIENCE IN COMPUTER SCIENCE
	MWIKIRIZE	COSMAS	TEACHING ASSISTANT	BACHELOR OF SCIENCE IN ENGINEERING
	MUZUULA	DANIEL KIGUBA	TECHNICIAN 1	DIPLOMA
	SEBBALE	DERRICK	ASSISTANT LECTURER	MASTER OF SCIENCE
	OKELLO	DOROTHY KABAGAJU	LECTURER	MASTER OF SCIENCE
	MATUMBWE	EDWARD	PART-TIME LECTURER	
	LUGUJJO	ERIABU	ASSOCIATE PROFESSOR	DOCTOR OF PHILOSOPHY
	KAYIZZI	FRED	LABORATORY ATTENDANT	PRIMARY LEAVING CERTIFICATE
	BAKABULINDI	GEOFFREY	TEACHING ASSISTANT	MASTER OF ENGINEERING - ELECTRICAL
	KAGARURA	GEOFFREY MARK	TEACHING ASSISTANT	BACHELOR OF SCIENCE IN TELECOMMUNICATION
	KITONE	ISAAC	ASSISTANT LECTURER	MSC. ELECTRICAL ENGINEERING
	SERUGUNDA	JONATHAN	ASSISTANT LECTURER	MASTER OF SCIENCE
	OVON	CAROL	TEACHING ASSISTANT	BACHELOR OF SCIENCE
	KAFUUZI	JOSAM ARAALI	STOREKEEPER	UGANDA ADVANCED CERTIFICATE OF EDUCATION
	KAKANDE	JOSEPHINE NAKATO	TEACHING ASSISTANT	BACHELOR OF SCIENCE IN ELECTRICAL ENGINE
	BUTIME	JULIUS	LECTURER	DOCTOR OF PHILOSOPHY
	KALUUBA	LIVINGSTONE	SENIOR LECTURER	MASTER OF SCIENCE
	TUMWEBAZE	MAUREEN	TEACHING ASSISTANT	BACHELOR OF SCIENCE
	MBABAZI	CHRISTINE	CLEANER/MESSENGER	
	NSUBUGA	MUBIRU DAN	LECTURER	MASTER OF SCIENCE
	MUGISHA	PATRICK	SENIOR LECTURER	MASTER OF SCIENCE
	BOGERE	PAUL	TEACHING ASSISTANT	MASTERS OF ENGINEERING - MECHANICAL
	DA SILVA IZAEAL	PEREIRA	SENIOR LECTURER	DOCTOR OF PHILOSOPHY
	MWESIGA	PETERSON	TEACHING ASSISTANT	BACHELOR OF SCIENCE
	GITTA	ROBERT	TECHNICAL ASSISTANT	DIPLOMA



	NTEGE	ROBINSON LUWERO	TECHNICIAN I	DIPLOMA
	MUGALA	SHEILA NDOBOLI	TEACHING ASSISTANT	BACHELOR OF SCIENCE IN ELECTRICAL ENGINE
	MWANJE	STEPHERN SSEKIRANDA	ASSISTANT LECTURER	BACHELOR OF SCIENCE IN ELECTRICAL ENGINE
	NAMUDDU	SUSAN	CLEANER/MESSENGER	
	NANZIRI	SARAH	PERSONAL SECRETARY	CERTIFICATES
	NYONGARWIZI	AKOL	LECTURER	DOCTOR OF PHILOSOPHY
	ARIHO	GORDON	ASSISTANT LECTURER	MASTER OF SCIENCE
	OKAU	RICHARD	LECTURER	DOCTOR OF PHILOSOPHY
	NAGGAGA	WILLIAM LUBEGA	TEACHING ASSISTANT	BACHELOR OF SCIENCE IN ELECTRICAL ENGINE
	MIYINGO	WOKULIRA EMMANUEL	TEACHING ASSISTANT	BACHELOR OF SCIENCE IN ELECTRICAL ENGINE
	<b>COMPUTER ENGINEERING</b>			
	LATING	PETER	LECTURER	DOCTOR OF PHILOSOPHY
	TICKODRI TOGBOA	STEVENS SUNDY	PROFESSOR	DOCTOR OF PHILOSOPHY
	NAMUJJU	DONA	TEACHING ASSISTANT	BACHELOR OF SCIENCE
	KATUMBA	ANDREW	TEACHING ASSISTANT	BACHELOR OF SCIENCE IN ELECTRICAL ENGINE
	WAKYIKU	DAVID	TEACHING ASSISTANT	BACHELOR OF SCIENCE IN ELECTRICAL ENGINE
	NANTAGYA	SARA	TEACHING ASSISTANT	BACHELOR OF SCIENCE IN CIVIL ENGINEERING
	MUSASIZI	PAUL ISAAC	ASSISTANT LECTURER	MASTER OF SCIENCE
	SSEMUUKUTU	DOMINIC	TEACHING ASSISTANT	MASTER OF SCIENCE
	MWIKIRIZE	COSMAS	TEACHING ASSISTANT	BACHELOR OF SCIENCE IN CIVIL ENGINEERING
	<b>MECHANICAL ENGINEERING</b>			
	MUWANGUZI	ABRAHAM JUDAH BUMALIRIVU	TEACHING ASSISTANT	
	SEBBIT	ADAM MUHAMMED	SENIOR LECTURER	DOCTOR OF PHILOSOPHY
	MWESIGYE	AGGREY	TEACHING ASSISTANT	BACHELOR OF SCIENCE IN MECHANICAL ENGINE
	WABWIRE	ANDREW	TECHNICIAN I	HIGHER DIPLOMA IN MARKETING
	KASAKYE	ANDREW PHILIP	TECHNICIAN II	
	NABACWA	BEAT	ASSISTANT LECTURER	MSC. MECHANICAL ENGINEERING
	KARIKO-BUHWEZI	BERNARD	SENIOR LECTURER	DOCTOR OF PHILOSOPHY
	NABUUMA	BETTY	ASSISTANT LECTURER	BACHELOR OF SCIENCE
	BWAMBALE	BIIRA MBAYAYI CONSTANCE	COPY TYPIST	
	BASALIRWA	CHARLES	TECHNICIAN II	
	TURINAWA	DUNSTAN DICKINSON	PART-TIME LECTURER	
	TUMUSIIME	EDMUND	TEACHING ASSISTANT	
	NTURANABO	FRANCIS	LECTURER	DOCTOR OF PHILOSOPHY
	KASEDDE	HILLARY	TEACHING ASSISTANT	BACHELOR OF SCIENCE IN ENGINEERING
	KACONCO	JAMES	LECTURER	MASTER OF SCIENCE



	KIRABIRA	JOHN BAPTIST	SENIOR LECTURER	MASTER OF SCIENCE
	OKODI	Mc Mondo	ASSISTANT LECTURER	DOCTOR OF PHILOSOPHY
	OKWARE	JOHN IKWA	LECTURER	BACHELOR OF SCIENCE IN ENGINEERING
	KAYE	JOSEPH	LABORATORY ATTENDANT	PRIMARY LEAVING CERTIFICATE
	OLWA	JOSEPH	TEACHING ASSISTANT	MSC. MECHANICAL ENGINEERING
	BYARUHANGA	JOSEPH KADOMA	ASSOCIATE PROFESSOR	DOCTOR OF PHILOSOPHY
	OKURE	MACKAY AKOORI ECUMAN	ASSOCIATE PROFESSOR	DOCTOR OF PHILOSOPHY
	LUBWAMA	MICHAEL	TEACHING ASSISTANT	BACHELOR OF SCIENCE IN ENGINEERING
	OKELLO	MORRIS INNOCENT	TECHNICIAN I	DIPLOMA
	MUBANGIZI	MOSES	TECHNICIAN I	
	KIBIRIGE	MPANGA SAUL	FITTER MECHANIC	
	MUKASA	NORBERT	ASSISTANT LECTURER	MASTER OF SCIENCE
	AJAMBO	PETER	LABORATORY ASSISTANT II	
	TUSIIME	SALVERINO	MESSENGER	UGANDA CERTIFICATE OF EDUCATION
	KUCEL	SAMUEL BAKER	SENIOR LECTURER	DOCTOR OF PHILOSOPHY
	AKAALI	SOWWED	TECHNICIAN I1	DIPLOMA
	NABAYEGO	TEDDY	LABORATORY ATTENDANT	
	OLUPOT	WILBERFORCE PETER	LECTURER	DOCTOR OF PHILOSOPHY
	<b>SURVEYING</b>			
	GIDUDU	ANTHONY	SENIOR LECTURER	DOCTOR OF PHILOSOPHY
	TIBAKUNIRWA	CHRISTINE	SECRETARY	CERTIFICATE
	ASIIMWE	CHRISTINE	TEACHING ASSISTANT	BACH OF SCI IN SURVEYING & LAND INFO SYS
	MWESIGE	GODFREY		
	SSENGENDO	RONALD		
	ORENA-BILLA	JOHN CHARLES	LECTURER	MASTER OF SCIENCE
	OTUKEI	JOHN RICHARD	ASSISTANT LECTURER	MASTER OF SCIENCE
	WABINENO	LILIAN MONO	ASSISTANT LECTURER	MASTER OF SCIENCE
	MAZZI	LYDIA KAYONDO	ASSISTANT LECTURER	BACHELOR OF SCIENCE
	NSENGIYUMVA	MATHIAS	CLEANER/MESSENGER	
	MUSINGUZI	MOSES	LECTURER	DOCTOR OF PHILOSOPHY
	MUKIIBI - KATENDE	MOSES WASWA	SENIOR LECTURER	DOCTOR OF PHILOSOPHY
	NGWICARACH	PYERINA	TECHNICIAN I	
	IRUMBA	RICHARD	LECTURER	MASTER OF SCIENCE
	MUGUMYA	VINCENT	LECTURER	MASTER OF SCIENCE
	OKIA	YAFESI	LECTURER	DOCTOR OF PHILOSOPHY
	ABEHO	DIABAH ROSE	TEACHING ASSISTANT	BSC SURVEYING
	MAKABAYI	BRIAN	TEACHING ASSISTANT	BSC SURVEYING



	<b>DEAN'S OFFICE</b>			
	MUGISHA	MASESANE EMMANUEL	ASSISTANT REGISTRAR	MASTERS
	TURYAMUREEBA	ANNETTE	PROJECTS OFFICER	MASTER OF SCIENCE
	NAMUBIRU	JOSEPHINE	ADMINISTRATIVE ASSISTANT	MASTERS
	KASUSSE	MICHAEL	LIBRARIAN	
	NAKAMANYA	BARBARA	CLEANER/MESSENGER	PRIMARY LEAVING CERTIFICATE
	KABENGWA	DAVID	CLEANER	
	HASAHYA	DORCAS	SENIOR COPY TYPIST	DIPLOMA
	NALUNKUMA	ESTHER	CLEANER	PRIMARY LEAVING CERTIFICATE
	BIRUNGI	CONNIE	MESSENGER	
	KABENGWA	DAVID	CLEANER	
	KIKWAYA	MICHEAL	CLEANER	
	KOYESIGA	WINFRED	TECHNICHIAN	UGANDA CERTIFICATE OF EDUCATION
	NAMULI	ROBINAH	CLEANER/MESSENGER	PRIMARY LEAVING CERTIFICATE
	SSALI	SAMUEL	CLEANER/MESSENGER	UGANDA CERTIFICATE OF EDUCATION
	NANSUBUGA	NOELINE	POOL STENGGRAPHER	BACHELOR OF ARTS
	SSEGWAYA	VINCENT	GROUNDSMAN	
	SSALI	ABDUL	CLEANER	
	TAMARE	FREDRICK	HEAD CLEANER	CERTIFICATE
	LUTAAYA	HOSEA	DRIVER	UGANDA CERTIFICATE OF EDUCATION
	MWIYERETSI	JAMES	SANITARY CLEANER	UGANDA ADVANCED CERTIFICATE OF EDUCATION
	NABAGGALA	JOSEPHINE	CUSTODIAN	
	MUHANGI	KABITURA YOROKAMU	CUSTODIAN	
	NAKANWAGI	ROBINAH	CLEANER	DIPLOMA
	NAMEMBWA	ROBINNAH	SANITARY CLEANER	
	NAMUSISI	RUTH	SENIOR PERSONAL SECRETARY	CERTIFICATE IN COMPUTER APPLICATION
	MUSHABE	SAMUEL	SANITARY CLEANER	PRIMARY LEAVING CERTIFICATE
	KIBIRIGE	SYLVIA MWANJE NAKAYIZA	CLEANER	
	NAKAZIBWE	VALENTINA	CLEANER/MESSENGER	