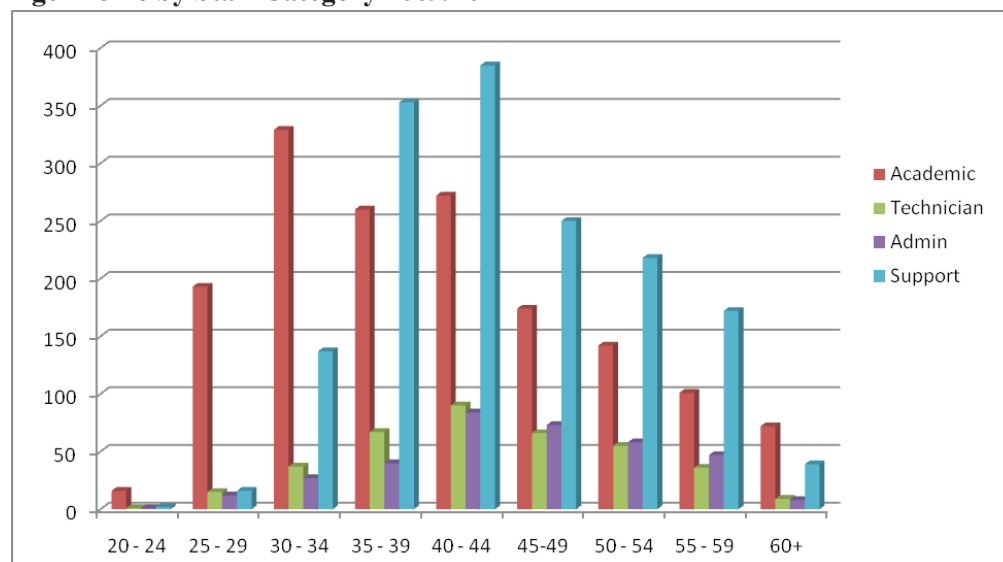


Age Profile by Staff Category 2009/10

There are five broad categories of staff in Makerere: Academic staff include, teaching, research and library staff; Technicians are predominantly in the science based teaching units and the estates and works department; Administrative staff are mostly in administrative units and support staff at the intermediate and group levels are in both teaching and administrative units. Kitchen staffs operate in the halls of residence for the provision of food to resident students.

Staff Development

The university staff development policy derived from the PhD qualification requirement for all academic staff, as such the Assistant Lecturer and Teaching Assistant positions are categorised as training grades for the PhD and masters programmes respectively. Contribution to staff development derives from various sources including the staff development fund established by the University, international organisations, scholarships by individual external universities and bilateral support under the institutional development program as well as American Foundations under the same programme.

Staff Development by Academic Ranks and Sex 2009/10

Rank	Masters		Doctorate		Total	% Female
	Male	Female	Male	Female		
Teaching Assistant	22	23	19	8	72	43%
Assistant Lecturer	1	0	84	48	133	36%
Lecturer	0	0	52	28	80	35%
Senior Lecturer	0	0	15	10	25	40%
Associate Professor	0	0	1	1	2	50%
Total	46		266		312	38%